



YOUR VISION OUR FRAME

COMPLETE GUIDE TO FENESTRATION COMPONENTS

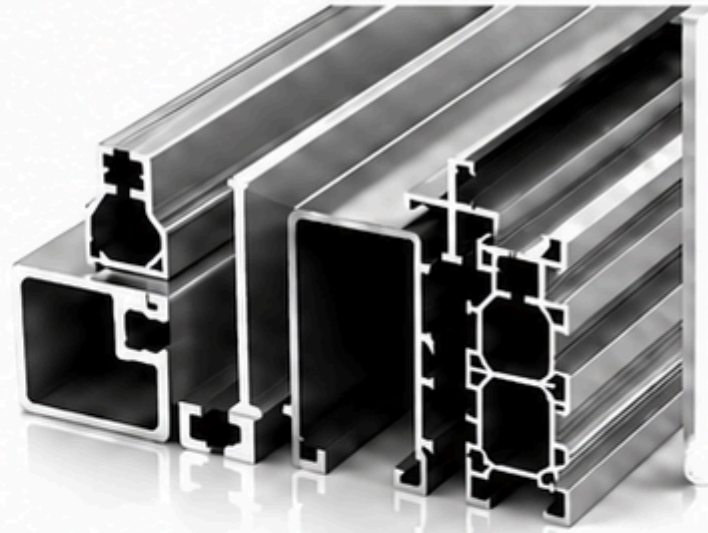
[www.myekka.com](http://www.myekka.com) 🔍

# ABOUT ALUMINIUM

Aluminium is a strong, lightweight, and durable material used in modern system doors and windows. It offers excellent strength, corrosion resistance, premium finish and long-lasting performance.

## WE USE ALLOY 6063 – T6

A premium grade aluminium known for high strength, smooth finish, corrosion resistance and long life. This alloy is perfect for high performance system doors and windows.



## WHAT IS T6 ALLOY?

T6 is a heat-treated aluminium alloy that improves hardness and strength. It makes the profile stronger, more durable and suitable for heavy-duty applications like large sliding doors and premium window systems.



HIGH STRENGTH



SMOOTH FINISH



CORROSION RESISTANCE



LONG LIFE

13

**Al**

Aluminum  
26.9815385



EKKA deals only in **PREMIUM SYSTEM ALUMINIUM DOORS AND WINDOWS** made with this high-quality alloy, ensuring better performance, durability and premium finishing.

# TYPOLOGIES

Different styles. Different functions. Perfect solutions for every space.



## 1. CASEMENT (RIGHT / LEFT)



A side-open window attached with hinges that opens either to the right or left. It provides excellent ventilation and a strong sealing system.



## 2. SLIDING (2 TRACK, 3 TRACK)



Sliding windows move horizontally on tracks. They are space-saving, easy to operate, and ideal for modern homes.



## 3. SLIDING DOOR (2, 3, 4 PANEL)



Large sliding door systems designed for balconies, patios, and luxury openings. More panels provide wider openings and premium aesthetics.



## 4. TILT & TURN WINDOW



A dual-function window that can either tilt inward for ventilation or fully open like a casement window for easy cleaning and airflow.



## 5. LIFT & SLIDE (FOR BIG AREA)



Designed for large openings and heavy glass panels. It offers smooth operation with excellent insulation and luxury appearance.



## 6. SLIDE AND FOLD



Multiple panels that slide and fold together to create a wide open space. Ideal for villas, banquet areas, and premium projects.



## 7. FIXED



Non-openable windows used mainly for light entry, visibility, and aesthetic elevation.

# HINGES

Hinges are essential hardware components that support the opening and closing movement of doors and windows. They ensure smooth operation, durability, and strength.

## 01 FRICTION HINGE



- ✓ Commonly used in openable windows.
- ✓ Allows controlled opening and holds the sash in position.
- ✓ Provides smooth operation and excellent stability.

## 02 BUTT HINGE



- ✓ A standard hinge used for side-opening doors and windows.
- ✓ Ensures basic and reliable opening and closing movement.
- ✓ Strong and durable for daily use.

## 03 BUTT HINGE WITH BEARINGS



- ✓ Upgraded version of butt hinge with bearing support.
- ✓ Offers smoother movement and reduced friction.
- ✓ Better load-bearing capacity and longer life.

## 04 CONCEALED HINGE



- ✓ Hidden inside the frame for a clean and premium look.
- ✓ Provides strong performance with excellent aesthetics.
- ✓ Ideal for modern and luxury applications.

## 05 PIVOT HINGE



- ✓ Used for doors that rotate from top and bottom pivot points.
- ✓ Allows smooth rotation and supports heavy doors.
- ✓ Ideal for main doors and premium entrances.



**STRONG SUPPORT**  
Ensures stability and long-lasting performance.



**SMOOTH FUNCTION**  
Provides effortless opening and closing.



**DURABLE & RELIABLE**  
Built to handle weight and daily usage.



**PREMIUM FINISH**  
Enhances the look and value of your frames.

# WOOL PILE

Wool pile is a soft sealing material used in sliding windows and doors. It is fitted in the profile channels to create a barrier between the moving sashes, improving the overall sealing performance of the system.



It plays an important role in preventing dust, noise, air leakage and helps in smooth & long-lasting operation of the system.



**HIGH QUALITY WOOL PILE**

Dense, durable and designed for superior performance.

## BENEFITS



### DUST PROTECTION

Prevents dust, dirt and pollutants from entering inside.



### NOISE REDUCTION

Acts as a sound barrier and reduces outside noise effectively.



### SMOOTH SLIDING

Reduces friction between profiles for smooth and effortless sliding.



### BETTER AIR SEALING

Minimizes air leakage and improves insulation for a comfortable environment.



### WATER RESISTANCE SUPPORT

Works with other sealing components to enhance water resistance.

### WHERE IT IS USED

Used in sliding windows, sliding doors and other systems to enhance sealing and performance.



**Small Component. Big Difference in Performance.**

# GASKET

Gaskets are rubber sealing components used between glass and aluminium profiles. They play a vital role in providing complete sealing, ensuring high performance, durability and comfort in doors and windows.



High quality gaskets ensure protection from water, air, dust and noise while improving the life and performance of the entire window or door system.



## PREMIUM QUALITY GASKET

Made from high grade EPDM material for long life, elasticity and superior sealing performance.

## BENEFITS



### WATER TIGHTNESS

Prevents water leakage by creating a strong sealing barrier.



### AIR TIGHTNESS

Stops air infiltration and maintains indoor comfort in all seasons.



### NOISE INSULATION

Reduces outside noise and creates a quieter and more comfortable environment.



### VIBRATION CONTROL

Absorbs vibration and ensures smooth and stable performance.



### BETTER GLASS PROTECTION

Acts as a cushion between glass and aluminium for added safety.

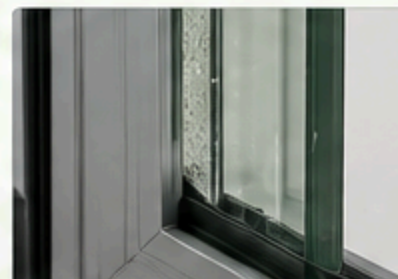


### LONG LASTING PERFORMANCE

UV resistant and highly durable for long term reliable use.

## WHERE IT IS USED

Used in windows, doors, sliding systems, curtain walls and other aluminium glazing applications for complete sealing and protection.



**STRONG SEAL.  
BETTER COMFORT.  
LONGER LIFE.**

# HANDLES

Handles are important operating hardware used for opening, closing, locking and smooth functioning of doors and windows. Different systems require different types of handles depending on design and functionality.



### STRONG & DURABLE

Made from high quality materials for long lasting performance.



### SMOOTH OPERATION

Ergonomic design ensures easy grip and effortless functionality.



### SECURE & RELIABLE

Compatible with advanced locking systems for maximum safety.

## 01 SLIDING HANDLE



Used in sliding windows and doors for smooth opening and closing movement.

## 02 D HANDLE



A strong pull handle commonly used in doors for easy grip and premium look.

## 03 COCKSPUR HANDLE



Mostly used in casement windows for simple locking and easy operation.

## 04 ESPAG HANDLE



Used with multi-point locking systems for better security and smooth operation.

## 05 TILT & TURN HANDLE



Special handle used in tilt and turn windows to control both opening functions.

## 06 LIVER HANDLE



A premium designer handle known for modern appearance and smooth usage.

## 07 FLUSH HANDLE



Flat surface handle used where minimal projection and sleek design are required.

## 08 LOCKABLE HANDLE



A secure handle system with locking function for additional safety.



### ERGONOMIC DESIGN

Comfortable grip for easy operation.



### HIGH DURABILITY

Built to withstand daily use and harsh conditions.



### CORROSION RESISTANT

Long lasting finish with high resistance to rust.



### PERFECT COMPATIBILITY

Works seamlessly with various window and door systems.



### ENHANCED SECURITY

Supports advanced locking mechanisms for your safety.

# GLASS

Glass is one of the most important parts of modern doors and windows. Different types of glass are selected based on safety, privacy, energy efficiency, and design requirements.



**STRONG & DURABLE**  
Made from high quality materials for long lasting performance.



**SMOOTH OPERATION**  
Ergonomic design ensures easy grip and effortless functionality.



**SECURE & RELIABLE**  
Compatible with advanced locking systems for maximum safety.

**01 TOUGHENED GLASS (CLEAR)**



Strong safety glass that is more durable than normal glass and breaks safely.

**02 LAMINATED GLASS**



Two glass layers joined with a protective interlayer for added safety and sound insulation.

**03 DGU GLASS**



Double Glazed Unit glass improves thermal insulation and sound reduction.

**04 REFLECTIVE GLASS**



Controls sunlight and heat while providing a premium reflective appearance.

**05 TINTED GLASS**



Colored glass used for heat reduction, privacy, and decorative appeal.

**06 FROSTED GLASS**



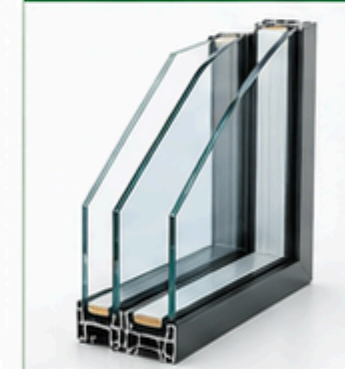
Provides privacy while allowing natural light to pass through.

**07 LOW-E GLASS**



Energy-efficient glass that reduces heat transfer and improves indoor comfort.

**08 INSULATED GLASS (ADV DGU)**



Advanced double-glazing system for higher thermal and acoustic performance.



**SAFETY FIRST**

Designed to ensure maximum safety and protection.



**ENERGY EFFICIENT**

Helps in maintaining indoor temperature and reducing energy costs.



**SOUND INSULATION**

Reduces external noise and creates a peaceful environment.



**ENVIRONMENT FRIENDLY**

Sustainable solutions that contribute to a better tomorrow.



**BUILT TO LAST**

High quality glass engineered for long lasting performance.

# ROLLERS

Rollers help sliding doors and windows move smoothly on tracks. Their quality directly affects operation and durability.



**STRONG & DURABLE**  
Made from high quality materials for long lasting performance.



**SMOOTH OPERATION**  
Ergonomic design ensures easy grip and effortless functionality.



**SECURE & RELIABLE**  
Compatible with advanced locking systems for maximum safety.

## 01 SINGLE WHEEL ROLLER



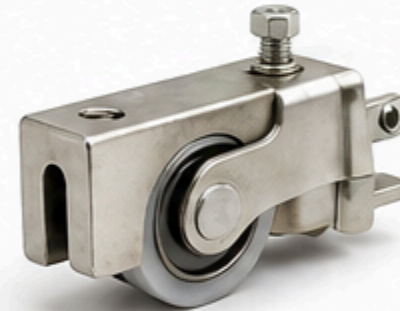
Basic roller used for lightweight sliding systems.

## 02 DOUBLE WHEEL ROLLER



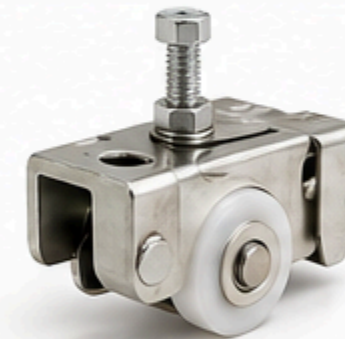
Provides better balance and smoother movement for regular use.

## 03 HEAVY DUTY ROLLER



Used for large and heavy sliding doors requiring stronger support.

## 04 ADJUSTABLE ROLLER



Allows height adjustment for better alignment and smooth performance.

## 05 ROLLER



Durable rollers with quiet and smooth movement performance.



**LONG LASTING**  
Built with premium materials for extended durability.



**SMOOTH MOVEMENT**  
Engineered for effortless and efficient sliding.



**QUIET OPERATION**  
Ensures noise free and comfortable use.



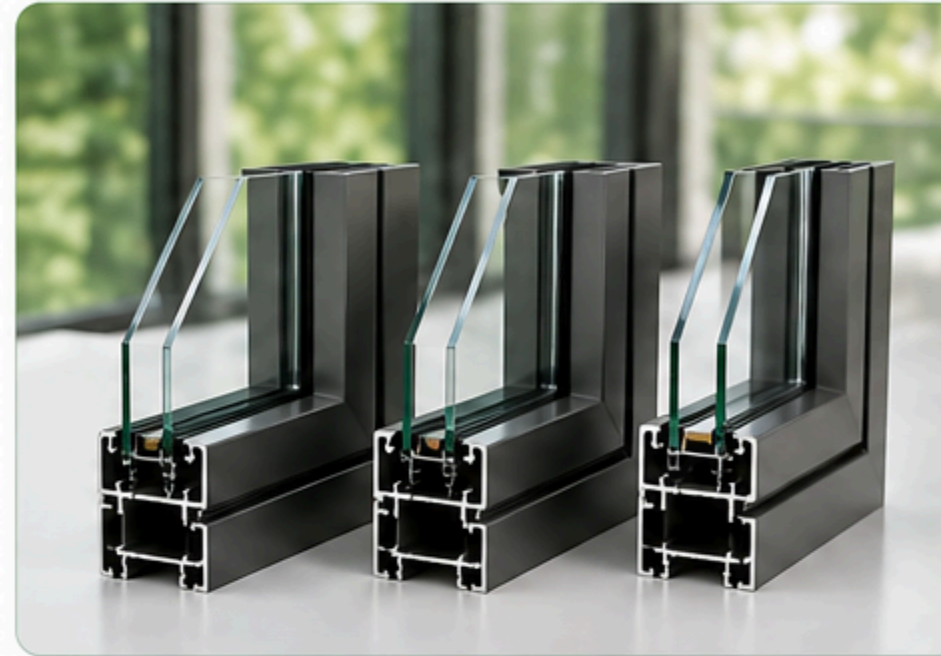
**LOW MAINTENANCE**  
Designed for reliable performance with minimal maintenance.



**HIGH COMPATIBILITY**  
Suitable for a wide range of sliding door and window systems.

# PROFILE

Profiles are the aluminium sections used to create the structure of doors and windows. Profile size affects strength, durability, and application.



**STRONG & DURABLE**  
Made from high quality materials for long lasting performance.

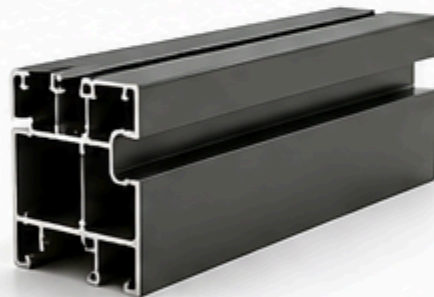


**SMOOTH OPERATION**  
Ergonomic design ensures easy grip and effortless functionality.



**SECURE & RELIABLE**  
Compatible with advanced locking systems for maximum safety.

## 01 30 MM



Used for lighter applications and smaller openings.

## 02 40 MM



Suitable for medium-duty systems with balanced strength and design.

## 03 50 MM



Heavy-duty premium profile used for large openings and stronger systems.



**HIGH STRENGTH**  
Engineered for maximum structural strength and load-bearing capacity.



**CORROSION RESISTANT**  
Powder coated aluminium profiles for long lasting protection.



**LIGHTWEIGHT**  
Strong yet lightweight material for easy handling and installation.



**PRECISE ENGINEERING**  
Manufactured with high precision for perfect fit and performance.



**DESIGN FLEXIBILITY**  
Available in multiple sizes and designs to suit various architectural needs.

# LOCKS

Locks provide security and safety in doors and windows. The locking system depends on the type of opening and security requirement.



High-quality locking systems ensure strong security, smooth operation and long-lasting performance.

**01**

## SINGLE POINT LOCK

Basic locking system with one locking point, suitable for standard applications.



**02**

## MULTI POINT LOCK

Advanced locking system with multiple locking points for better safety, sealing, and premium security.



## BENEFITS



### ENHANCED SECURITY

Protects against unauthorized access and break-ins.



### BETTER SEALING

Keeps doors and windows tightly closed, improving insulation and comfort.



### DURABLE & RELIABLE

Built with high-quality materials for long life and consistent performance.



### SMOOTH OPERATION

Ensures easy locking and unlocking with minimal effort.



### WIDE COMPATIBILITY

Suitable for different types of doors and windows.

## WHERE IT IS USED

Used in doors and windows of homes, offices, commercial buildings and other facilities.



Casement Windows



Sliding Windows



Sliding Doors



Entrance Doors



Secure today, stronger tomorrow.

# ALUMINIUM v/s OTHERS

FEATURE	WOOD	uPVC	ALUMINIUM
 Truly panoramic design	✗	✗	✓
 Sleek profile thickness	✗	✗	✓
 Low maintenance	✗	✓	✓
 Wide single panel width	✗	✗	✓
 Withstands high cyclonic winds	✗	✗	✓
 UV & fading resistance	✗	✗	✓
 Termite & Rodent resistance	✗	✗	✓
 Resistance to colour fading	✗	✗	✓
 Recyclable	✗	✗	✓

# WHEN INNOVATION MEETS PERFECTION.

At Ekka, we envision a world where windows replace walls, creating spaces filled with light, openness, and connectivity. Our mission is to transform everyday environments into extraordinary ones by blending robust protection with seamless indoor-outdoor integration. Embrace a brighter, more connected world with Ekka where every window open up new possibilities for creative and harmony.

**STORM PROOF STRENGTH**  
Designed to withstand cyclonic winds

**WIDER VIEW**  
Larger panel sizes

**NO RATTLING**  
Sturdy quality accessories and woolpile

**NOISE INSULATION**  
High quality gaskets & fin based woolpile

**RUGGER RELIABILITY**  
Strongest aluminium 6063

**NO DRIPS OR LEAKS**  
Efficient water drainage system

**PEACE OF MIND**  
20 Year brand warranty on profile + 5 year warranty on hardware

**ENHANCED SECURITY**  
Multi-point locking mechanisms

**MADE FOR INDIA CONDITIONS**  
Collapsible integrated pest mesh

**SMOOTH OPERATION**  
1L+ Cycle tested rollers & hinges

**HIGH QUALITY SEALING**  
Silicated fin-based wool pile to block out water, dust & sound



EKKA deals only in **PREMIUM SYSTEM ALUMINIUM DOORS AND WINDOWS** made with this high-quality alloy, ensuring better performance, durability and premium finishing.

# LET'S CONNECT

Stay connected with Ekka Windows across all platforms for the latest updates, inspiration and more.



WEBSITE

[www.myekka.com](http://www.myekka.com)

Visit our website to explore our products, solutions and more.



INSTAGRAM

[@ekkawindows](https://www.instagram.com/ekkawindows)

Follow us for daily updates, projects, and design inspiration.



FACEBOOK

[Ekka Windows](https://www.facebook.com/EkkaWindows)

Like our page and be a part of our growing community.



LINKEDIN

[Ekka Fenestration](https://www.linkedin.com/company/EkkaFenestration)

Connect with us professionally and stay updated.



YOUTUBE

[Ekka Windows](https://www.youtube.com/EkkaWindows)

Subscribe to our channel for product videos, installations and more.



PREMIUM QUALITY



INNOVATIVE SOLUTIONS



TRUSTED PARTNER



CUSTOMER FOCUSED



BUILT FOR PERFORMANCE



Thank you for exploring Ekka Windows.  
We are committed to delivering excellence, innovation and value  
— framing better views, building a better tomorrow. ❤️

